

Quick Start User Guide for the ZFP Fire Alarm Control Panel

THIS GUIDE IS FOR GENERAL USERS (ACCESS LEVEL 1) AND AUTHORISED USERS (ACCESS LEVEL 2) OF THE ZFP PANEL AND SUMMARISES KEY INFORMATION PROVIDED IN THE MAIN USER MANUAL (DOCUMENT NO. DFU5000501). IT IS NOT A SUBSTITUTE FOR THE MAIN MANUAL WHICH SHOULD BE READ THOROUGHLY.

Operator Actions in the event of a Fire Alarm

The designated responsible person should carry out the building's fire management plan. Depending on this plan you may:

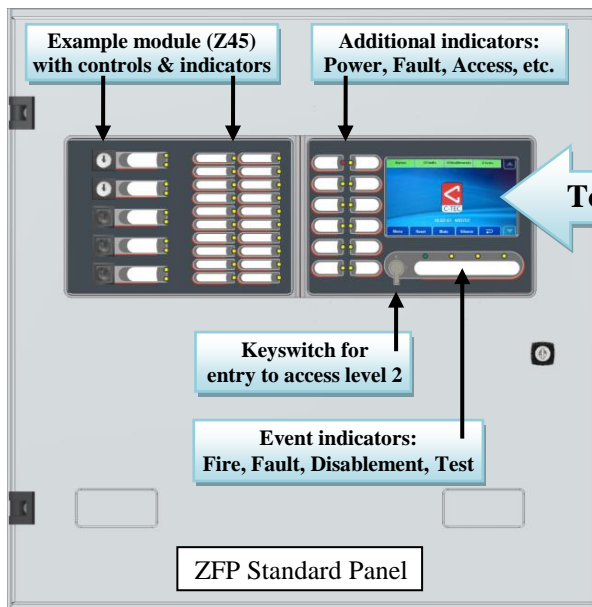
| | |
|------------------------------------------------------------------------------|-----------------------------------------------------------------------------------------------------------------------------------------------------------------|
| Silence <u>active</u> alarm sounders: | Press Silence then enter access level 2 (if requested) |
| Reset the panel: | <u>Ensure the cause of alarm has been investigated, cleared and alarm sounders are silenced.</u> Press Reset then enter access level 2 (if requested) |
| Resound the alarm sounders (when alarm sounders are <u>silenced</u>): | Enter access level 2 (if requested), then press ReSound Sounders |
| Silence the panel's internal buzzer: | Press Mute |

Access Levels

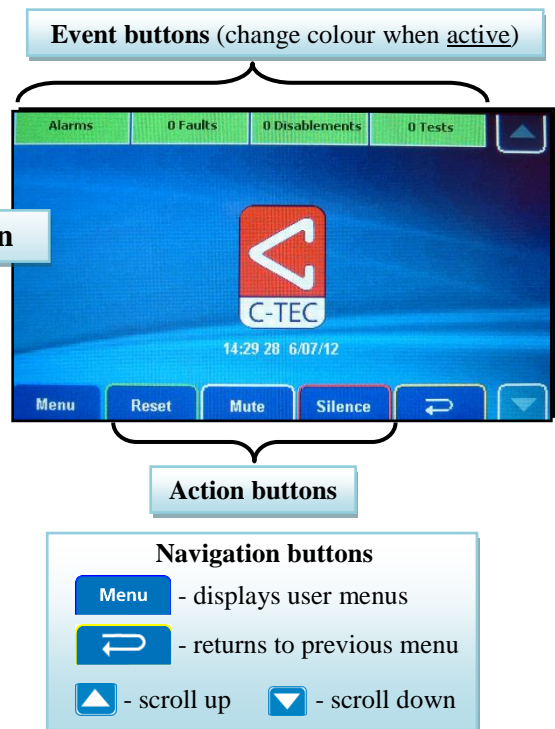
The panel has three access levels, with each level providing various menu options (see overleaf for menu structure).

- Access level 1 is for general users and allows basic operator actions to be performed such as checking panel indicators.
To enter access level 1: Press **Menu**
- Access level 2 is for authorised users and provides additional features such as setting system disablements, setting the time/date and changing the access level 2 code. The default code entry to access level 2 is: **3333**.
To enter access level 2: Press **Menu** then press **Access Level 2** then enter the 4-digit code, OR turn the panel keyswitch anticlockwise to the horizontal (I) position.
- Access level 3 is for authorised system engineers only and is the panel's engineering/programming level.

Touchscreen, Indicators & Controls



Touchscreen



Additional Operator Actions

| | |
|--------------------------------------------|------------------------------------------------------------------------------------------------------|
| Display <u>active</u> fires: | Press Alarms |
| Display <u>active</u> faults: | Press n Faults (the total number 'n' of faults is shown on this button) |
| Display <u>active</u> disablements: | Press n Disablements (the total number 'n' of disablements is shown on this button) |
| Display <u>active</u> tests: | Press n Tests (the total number 'n' of tests is shown on this button) |
| View more events and menus: | Press ▲ and ▼ |
| General fault(s): | The touchscreen will show a message detailing the type and location of the fault. Call the engineer. |

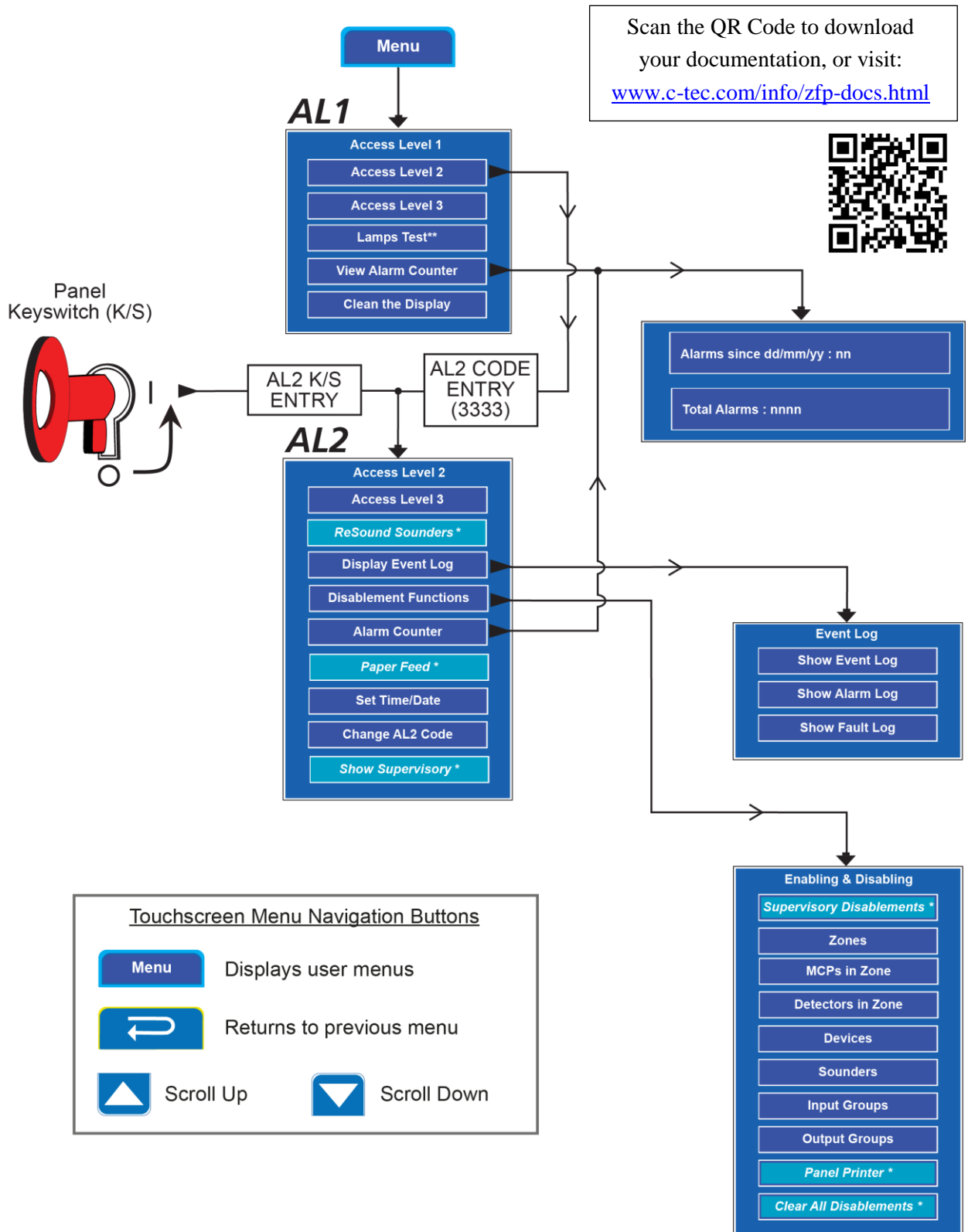
Quick Start User Guide for the ZFP Fire Alarm Control Panel

AL1 - Access Level 1 (No Code Required)

AL2 - Access Level 2 (Code 3333)

* Menu option shown will only be available if relevant to the panel's status.

** Pressing 'Lamps Test' button also displays the panel's firmware versions.



Errors and omissions excepted. The manufacturer of this product operates a policy of continuous improvement and reserves the right to alter product specifications at its discretion and without prior notice. All of the instructions covered in this guide have been carefully checked prior to publication. However, no responsibility can be accepted by the manufacturer for any inaccuracies, or any misinterpretations contained herein.



Manufacturer: Compuionics Limited (C-TEC), Challenge Way, Martland Park, Wigan, Lancashire WN5 0LD. www.c-tec.com