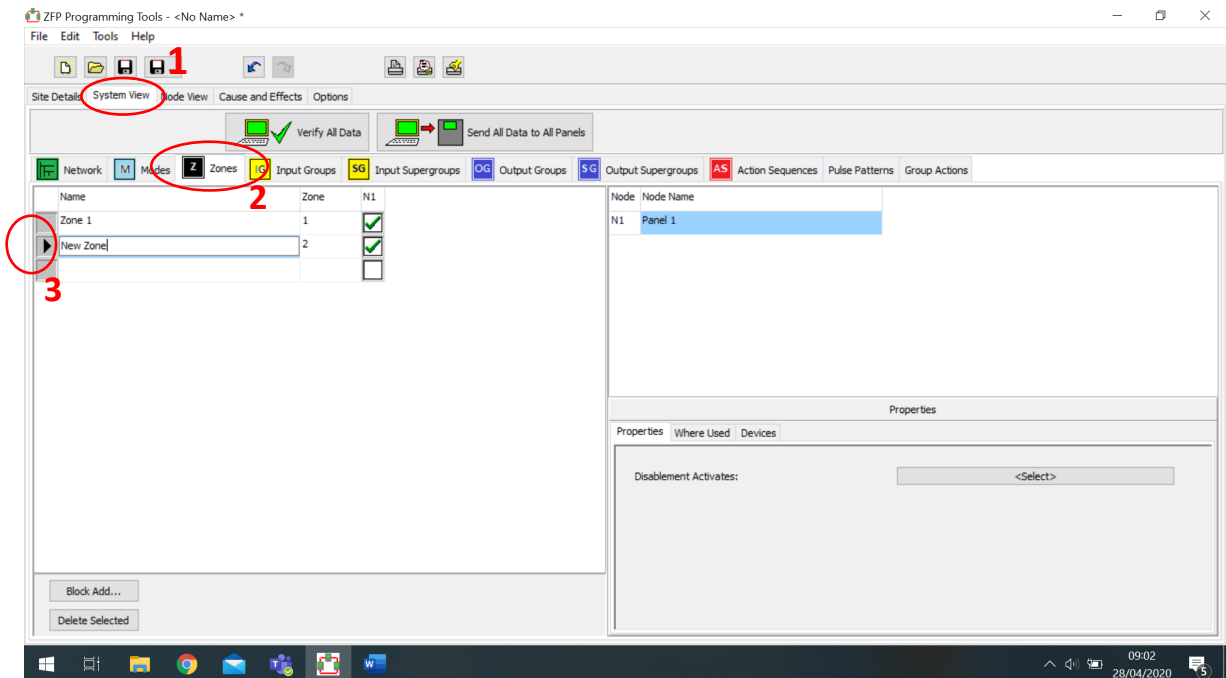


Adding a Zone to a ZFP config via ZTOOLS

Firstly take a download from the panel using ZTOOLS. Then follow the numbered steps below for Fig 1.

1. Click on System View.
2. Click on Zones.
3. Click on the next available text box and add text for the new Zone name.

Fig 1



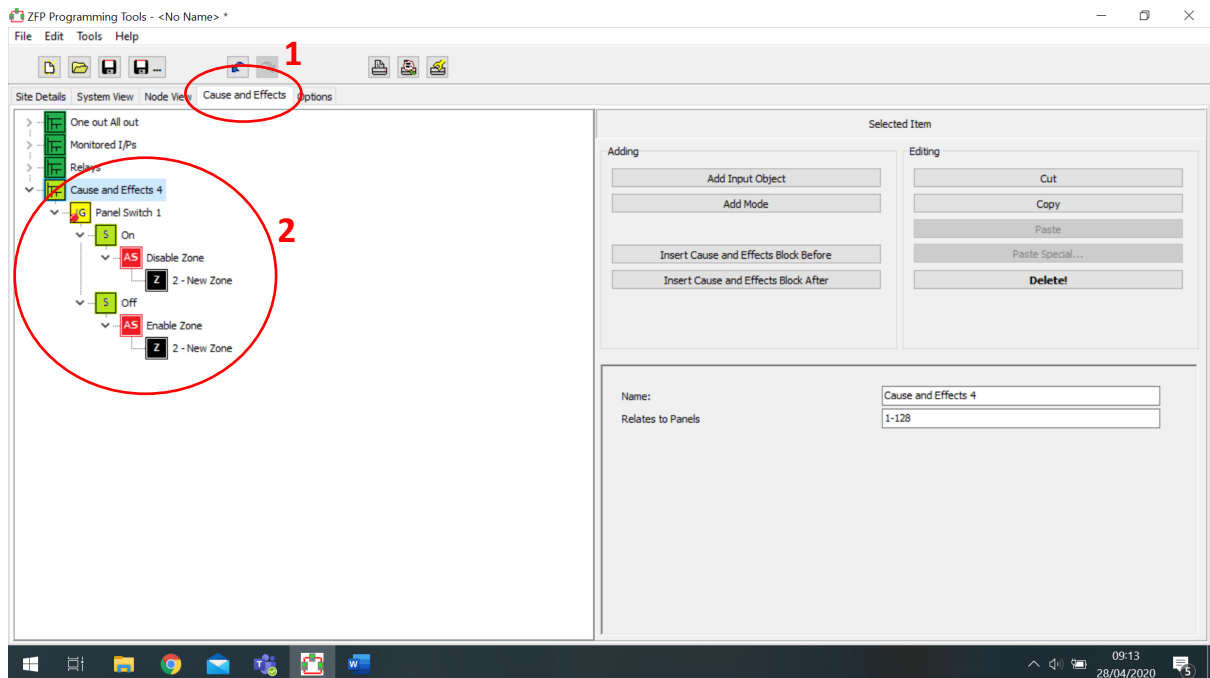
The steps below and Fig 2 explain how to add the new Zone to a Cause and Effect tree.

For this exercise we have used a zone disablement via a panel switch.

Also see App Note ***** for more information on building a Cause and Effects tree.

1. Click on Cause and Effects.
2. Create a new Cause and Effects tree using the New Zone.

Fig 2



Manufacturer: Computationics Limited (C-TEC), Challenge Way, Martland Park, Wigan, Lancashire WN5 0LD. www.c-tec.com.
Errors and Omissions Excepted (E&OE).