

## Manually adding a Z45

All ZFP fire panels have a modular design, therefore, you can add any of C-TEC's Indicator modules via the ZTOOLS.

This document explains how to manually add a Z45 (20 Zone Indicator Module c/w 5 Keyswitches) to an existing ZFP fire panel via the ZTOOLS.

The keyswitches can be programmed to do a wide range of special programming features such as disabling inputs/outputs, triggering inputs/outputs, manually evacuating buildings, mode changes, time delays, etc.

Fig 1

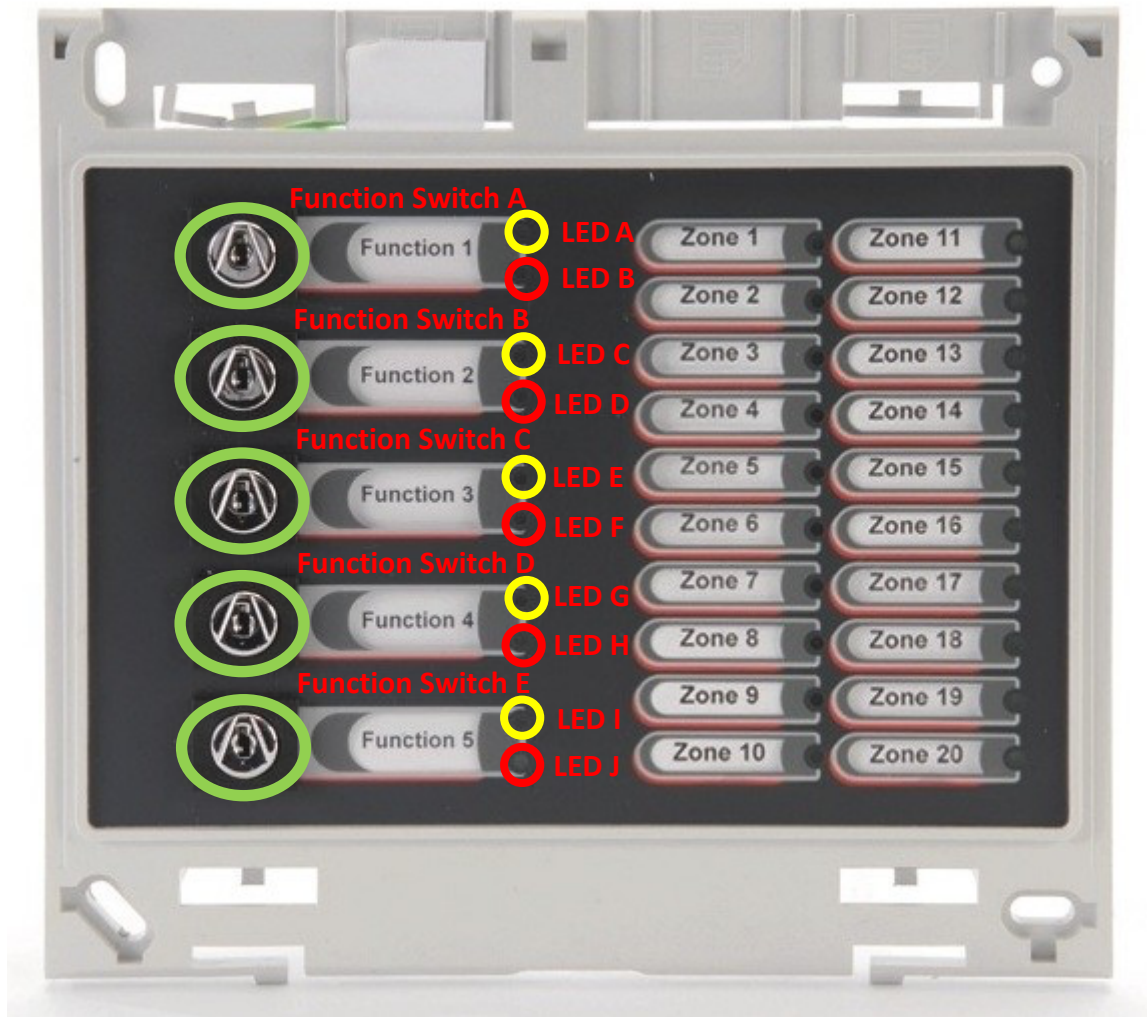


Fig 1 shows in green the function keyswitches and in yellow and red the LED's which show the state in which the keyswitch is in, yellow being Inactive red being Active.

It is important that you get the function switches and LEDs programmed in the correct order.

On page 2 of this document is a table to show how to program 5 function keyswitches and the LEDs using the ZTOOLS.

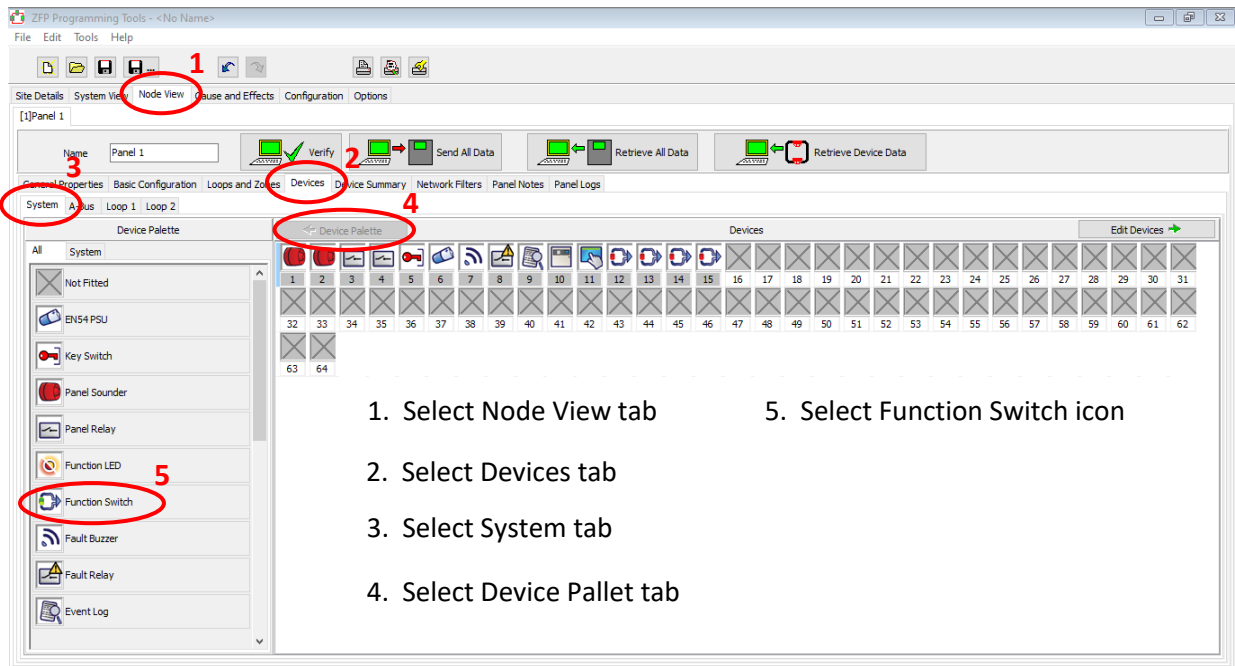
Table 1

Keyswitch Number	Function Switch	LED Inactive	LED Active
1	A	A	B
2	B	C	D
3	C	E	F
4	D	G	H
5	E	I	J

Fig 2 shows how to add the function switches to either an existing or new config file.

Follow the steps on Fig 2 below.

Fig 2



Once the steps above have been completed Fig 3 below shows 5 function switches added to the config file, and how to select the function switch and LED's.

Fig 3

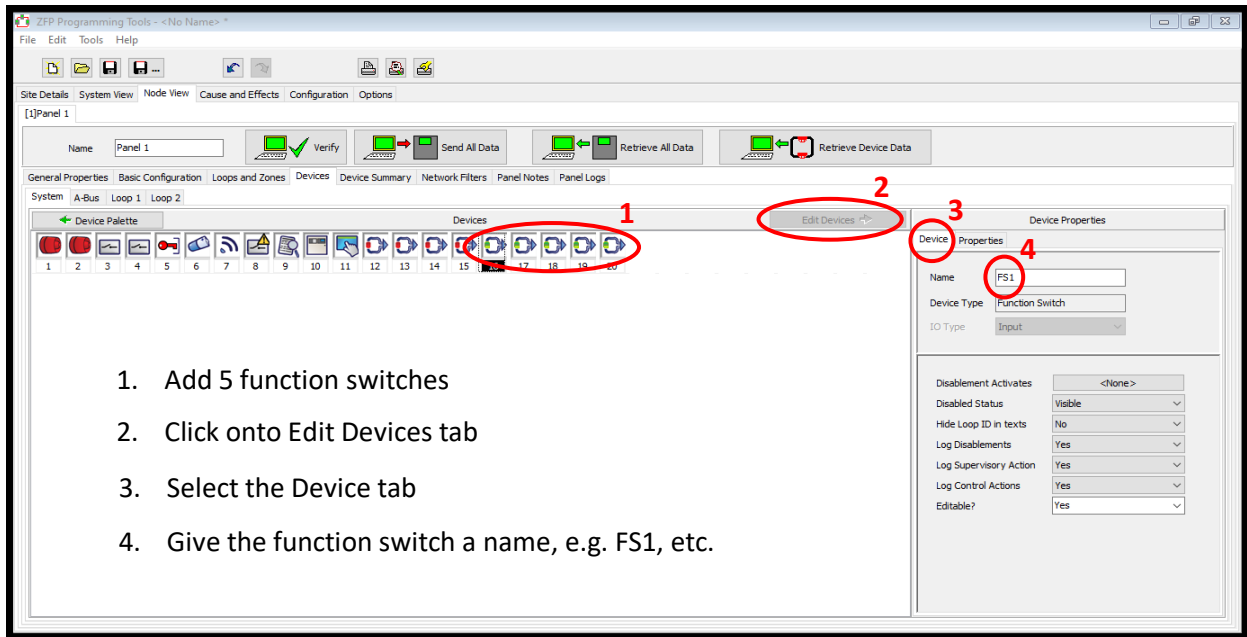
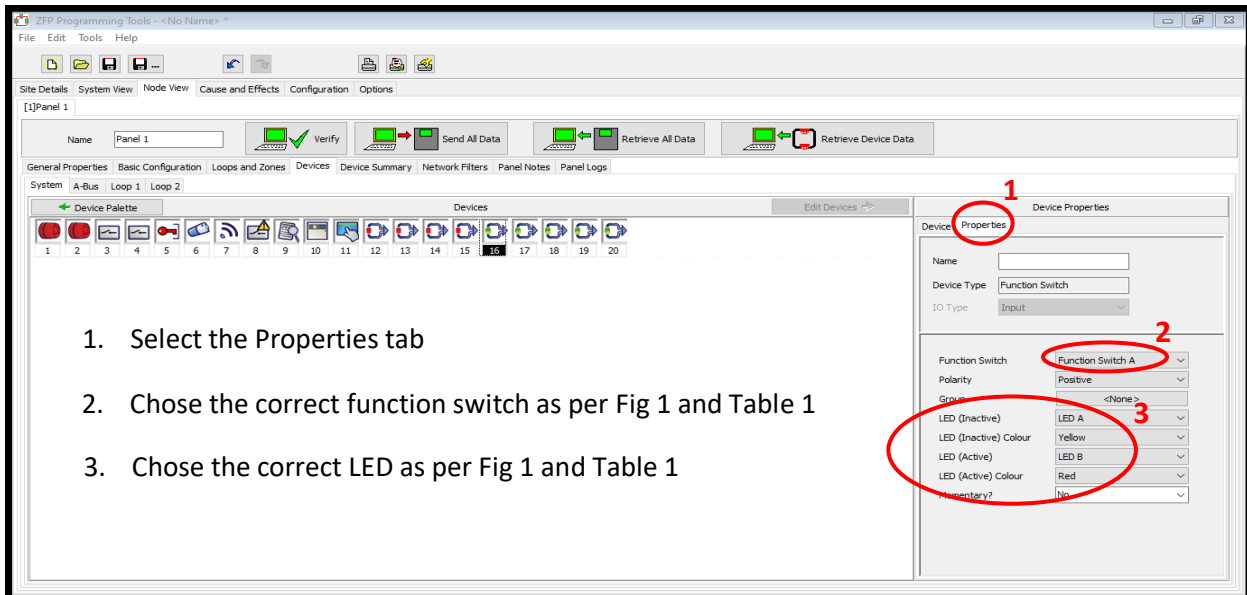


Fig 4 show the final steps on setting up the Z45 module.

Fig 4



Manufacturer: Computationics Limited (C-TEC), Challenge Way, Martland Park, Wigan, Lancashire WN5 0LD. [www.c-tec.com](http://www.c-tec.com). Errors and Omissions Excepted (E&OE).